



No.7 Xinzha Middle Road, Zhashang Zone,  
Yangshe Town, Zhangjiagang City,  
Jiangsu Province, P.R.C.



Tel: 86 512 5879 2699  
Fax: 86 512 5879 2633



info@xiehe.com.cn  
www.xiehe.com

© 2020 xiehe medical,  Designed by First Impression® Tel: +86 512 52000099 info@firstimpression.com

# XIEHE MEDICAL





## ABOUT XIEHE

Leading stretcher manufacture XIEHE was founded in 2005. We are dedicated to be a professional and well know factory on research and sales of medical equipment. Our products can be divided into 3 main ranges, emergency stretchers and relevant first aid products, hospital furniture and funeral products. We also provide OEM service if needed.

We strictly carry out ISO13485 quality control system. Our products have been obtained TUV, CE, FDA certificates. XIEHE medical products have gained good reputation from both domestic and abroad since 2005.

XIEHE medical has been carrying out the globalized marketing and sales strategy. After over ten years of great efforts and support of partners, we have more than 30 distributors and our products have reached more than 120 countries.

We focus on building long-term partnerships with distributors and integrators. Through our passionate employees and strong cooperative technology, we can react customers' requirements with excellent and stable products and closer services.



## MANUFACTURE

XIEHE medical has accumulated a large number of talents and abundant experience, attracting many domestic and foreign customers with professional technology and exquisite quality. XIEHE medical continues to carry forward the spirit of diligence, progression, innovation and honesty. Our quality products are sold so well, winning deep favor from our users from all over the world.



## QUALITY CONTROL

In order to achieve the whole-process quality control, XIEHE has developed perfect quality control system to strictly control production, process, provide strong guarantee for product quality.



# Folding Stretcher

## Detailed Product Description

- This stretcher with wheels, outriggers and can be folded.
- It is made of high strength aluminum alloy and the waterproof canvas materials.
- Light-weighted, small-sized, easy-carried, reliable quality, use-safely and easy for sterilization, etc.
- Used for carrying patients and wounded person.

### YXH-1A1



### YXH-1A2



### YXH-1A3



## Technical Data

Model	Product Size (L x W x H)	Folding Size	Packing Size	Load Bearing	N.W. (1 pc)	G.W.
YXH-1A1	185 x 50 x 20 cm	92.5 x 50 x 9 cm	98 x 54 x 18 cm (2 pcs)	≤ 159 kg	6.5 kg	14 kg
YXH-1A2	185 x 50 x 18 cm	92.5 x 50 x 9 cm	98 x 54 x 18 cm (2 pcs)	≤ 159 kg	6 kg	13 kg
YXH-1A3	185 x 50 x 24 cm	92 x 50 x 11 cm	98 x 54 x 10 cm (1 pc)	≤ 159 kg	7 kg	9 kg

## Detailed Product Description

- This stretcher with wheels, outriggers and can be folded.
- It is made of high strength aluminum alloy and waterproof canvas materials.
- Light-weighted, small-sized, easy-carried, reliable quality, use-safely and easy for sterilization, etc.
- Used for carrying patients and wounded person.

### YXH-1A5



### YXH-1A6



## Technical Data

Model	Product size (L x W x H)	Folding Size	Packing Size (2 pcs)	Load Bearing	N.W. (1 pc)	G.W.
YXH-1A5	185 x 50 x 20 cm	92.5 x 50 x 10 cm	104 x 22 x 54 cm	≤ 159 kg	8 kg	9.5 kg
YXH-1A6	185 x 50 x 18 cm	92.5 x 50 x 10 cm	105 x 16 x 24 cm	≤ 159 kg	9.4 kg	10.5 kg



# Folding Stretcher

## Detailed Product Description

- This folding stretcher is made of high strength aluminum alloy and canvas material.
- Used for carrying patients and wounded person.

### YXH-1B1



### YXH-1B2



### YXH-1B3



## Technical Data

Model	Product Size (L x W x H)	Folding Size	Packing Size (2 pcs)	Load Bearing	N.W. (1 pc)	G.W.
YXH-1B1	185 x 50 x 3 cm	92.5 x 50 x 7 cm	99 x 56 x 18.5 cm	≤ 159 kg	4 kg	10 kg
YXH-1B2	185 x 50 x 3 cm	92.5 x 50 x 7 cm	99 x 56 x 18.5 cm	≤ 159 kg	6.5 kg	14 kg
YXH-1B3	185 x 50 x 3 cm	92 x 50 x 11 cm	99 x 56 x 18.5 cm	≤ 159 kg	6.5 kg	14 kg

## Detailed Product Description

- This folding stretcher is made of high strength aluminum alloy the canvas materials.
- This stretcher is intensified stretcher, with flexible handle and outrigger, can be folded by lengthwise.
- It is characterized by its being light-weighted, portable, easy to carry out and safe to use.
- It is mainly used for battle field and outdoor carrying patients and wounded person.

### YXH-1C



### YXH-1D



### YXH-1DL



## Technical Data

Model	Product Size (L x W x H)	Folding Size	Packing Size (1 pc)	Load Bearing	N.W. (1 pc)	G.W.
YXH-1C	220 x 55 x 15 cm	180 x 12 x 15 cm	185 x 13 x 17 cm	≤ 159 kg	7.5 kg	9.5 kg
YXH-1D	220 x 55 x 15 cm	95 x 20 x 9 cm	98 x 22 x 11 cm	≤ 159 kg	7.5 kg	8.2 kg
YXH-1DL	220 x 55 x 15 cm	50 x 26 x 18 cm	58 x 28 x 22 cm	≤ 159 kg	9 kg	9.8 kg

# Folding Stretcher

## Detailed Product Description

- This folding stretcher is made of high strength aluminum alloy and canvas materials.
- This stretcher is intensified stretcher, with flexible handle and outrigger, can be folded by lengthwise.
- It is characterized by its being light-weighted, portable, easy to carry out and safe to use.
- It is mainly used for battle field and outdoor carrying patients and wounded person.

### YXH-1E



Heavy-duty oxford cloth with PVC-coated in the back



### YXH-1EF



### YXH-1EL



## Technical Data

Model	Product Size (L x W x H)	Folding Size	Packing Size (1 pc)	Load Bearing	N.W. (1 pc)	G.W.
YXH-1E	185 x 48 x 3 cm	45 x 48 x 14 cm	48 x 50 x 15 cm	≤ 159 kg	4.5 kg	6.2 kg
YXH-1EF	190 x 64 x 86 cm	112 x 23 x 84 cm	112 x 23 x 84 cm	≤ 159 kg	20.2 kg	26.2 kg
YXH-1EL	185 x 48 x 21 cm	46 x 48 x 14 cm	53 x 50 x 15 cm	≤ 159 kg	7 kg	8 kg

## Detailed Product Description

- This folding stretcher is made of high strength aluminum alloy and canvas materials, also has pvc surface option.
- This stretcher is intensified stretcher, with flexible handle and outrigger, can be folded by lengthwise.
- It is characterized by its being light-weighted, portable, easy to carry out and safe to use.
- It is mainly used for battle field and outdoor carrying patients and wounded person.

### YXH-1F1



### YXH-1F1B



## Technical Data

Model	Product Size (L x W x H)	Folding Size	Packing Size (1 pc)	Load Bearing	N.W. (1 pc)	G.W.
YXH-1F1	208 x 55 x 14 cm	104 x 18 x 10.5 cm	108 x 18.5 x 10 cm	≤ 159 kg	4.7 kg	11 kg
YXH-1F1B	215 x 55 x 14 cm	104 x 18 x 10.5 cm	108 x 19 x 10 cm	≤ 159 kg	5.6 kg	12 kg

# Folding Stretcher

## Detailed Product Description

- This folding stretcher is made of high strength aluminum alloy material and water-proof leather materials.
- Light-weighted, small-sized, easy-carried, reliable quality, use-safely and easy for sterilization, etc.
- Used for carrying patients and wounded person.

### YXH-1F2



### YXH-1F3



## Technical Data

Model	Product Size (L x W x H)	Folding Size	Packing Size (1 pc)	Load Bearing	N.W. (1 pc)	G.W.
YXH-1F2	214 x 48 x 12 cm	46 x 48 x 14 cm	29 x 15 x 66 cm	≤ 159 kg	5 kg	6.2 kg
YXH-1F3	207 x 55 x 14 cm	207 x 9 x 17 cm	223 x 12 x 20 cm	≤ 159 kg	4.8 kg	6 kg

## Detailed Product Description

- It is mainly used for serious injured person, it is made of aluminum alloy.
- It can save rescue time, it has characteristics of durable, water-proof, small-sized as it can be piled up.
- It can save storage space, and avoid pollution of the floor.

### YXH-1F4



## Detailed Product Description

- This support is made of aluminum alloy.
- It is used to match YXH-1F4 stretcher.
- This support also can be folded to decrease volume.

### YXH-1F4A



## Technical Data

Model	Product Size (L x W x H)	Packing Size	Load Bearing	N.W. (1 pc)	G.W.
YXH-1F4	193 x 54 x 20 cm	193 x 58 x 42 cm (5 pcs)	≤ 159 kg	3.5 kg	22.5 kg
YXH-1F4A	121 x 80 x 80 cm	185 x 61 x 11 cm (1 set)	≤ 159 kg	8 kg	9 kg

# Folding Stretcher

## Detailed Product Description

- It is made of high strength aluminum alloy and waterproof canvas materials.
- Light-weighted, small-sized, easy-carried, reliable quality, use-safely and easy for sterilization, etc.
- Used for carrying patients and wounded person.

### YXH-1G



### YXH-1GL



Two or Four Folded

Orange Green



## Detailed Product Description

- With light self-weight and large bearing, it is easy to be folded.
- As one of ideal camp-out devices, it is mainly used for army and battle field and etc.

### YXH-1K



## Technical Data

Model	Product Size (L x W x H)	Folding Size	Packing Size	Load Bearing	N.W. (1 pc)	G.W.
YXH-1G	208 x 55 x 15 cm	104 x 17 x 9 cm	108 x 18 x 18.5 cm (2 pcs)	≤ 159 kg	5 kg	12 kg
YXH-1GL	215 x 55 x 15 cm	55 x 23 x 14 cm	68 x 30 x 18 cm (1 pc)	≤ 159 kg	5.6 kg	8.8 kg
YXH-1K	196 x 75 x 43 cm	95 x 20 x 11 cm	100 x 23 x 23 cm (2 pcs)	≤ 159 kg	7 kg	15 kg

## Detailed Product Description

- The folding stretcher is made of high strength aluminum alloy and PVC.
- This stretcher can be folded by lengthwise with flexible handle outrigger.
- It is mainly used in the hospitals and funeral houses to transport dead bodies.



YXH-1H



## Detailed Product Description

- The folding stretcher is made of steel A3 and PVC.
- This stretcher can be folded by lengthwise.
- It is mainly used in the hospitals and funeral houses to transport dead bodies.



YXH-1L



## Detailed Product Description

- The folding stretcher is made of high strength aluminum alloy and PVC.
- This stretcher can be folded by lengthwise with flexible handle and outrigger.
- It is mainly used in carrying patients and wounded people for the hospitals.



YXH-1M



## Technical Data

Model	Product Size (L x W x H)	Folding Size	Packing Size	Load Bearing	N.W. (1 pc)	G.W.
YXH-1H	208 x 53 x 36 cm	110 x 53 x 10 cm	113 x 55 x 22 cm (2 pcs)	≤ 159 kg	9 kg	20 kg
YXH-1L	200 x 51.5 x 10.5 cm	100 x 51.5 x 12 cm	112.5 x 56 x 25 cm (2 pcs)	≤ 159 kg	10.5 kg	23 kg
YXH-1M	230 x 55 x 13 cm	101 x 18 x 12.5 cm	105 x 19 x 16 cm (1 pc)	≤ 159 kg	8.4 kg	9 kg



## Folding Stretcher

### Detailed Product Description

- It is made of high strength aluminum alloy material and PVC.
- It can be converted to a chair.
- It is commonly used in narrow space, the two function wheels are convenient to move on land.



YXH-1N(A)



YXH-1N(B)



YXH-1N(C)



### Technical Data

Model	Product Size (L x W x H)	Folding Size	Packing Size (1 pc)	Load Bearing	N.W. (1 pc)	G.W.
YXH-1N(A)	185 x 50 x 21 cm	100 x 50 x 12 cm	108.5 x 55 x 13 cm	≤ 159 kg	9 kg	10 kg
YXH-1N(B)	192 x 50 x 20 cm	108.5 x 50 x 15 cm	110 x 54 x 16 cm	≤ 159 kg	9.6 kg	11 kg
YXH-1N(C)	186 x 50 x 14 cm	100 x 50 x 13 cm	108 x 56 x 13 cm	≤ 159 kg	8.6 kg	9.8 kg

## Spine Board

### Detailed Product Description

- This spine board with safety belts is made of HDPE material with no discharge contaminator, and firmness to wear.
- This plastic spine board also can be used as a floatable device.
- The structure is allowed X-rays because it's completely translucent.
- It is compatible with most head immobilization devices and strap mechanisms.
- It is mainly used for hospitals, sports, ambulance and outdoors to carry patients and wounded person.

### YXH-1A6A



Compatible with most head immobilizer

Made of a single piece of high density polyethylene, rigid and light

Moulded-in anatomic handles optimise transportation

Large space to allow even asymmetric immobilization of the lower limbs without interfering with the handles

The short edges are shaped and curved to facilitate handling of the patient and to increase maneuverability in confined spaces

### Technical Data

Model	Product Size (L x W x H)	Packing Size (1 pc)	Load Bearing	N.W. (1 pc)	G.W.
YXH-1A6A	184 x 45 x 6 cm	188 x 46 x 7 cm	≤ 159 kg	7 kg	8.8 kg

# Spine Board

## Detailed Product Description

- This spine board with safety belts is made of HDPE material with no discharge contaminator, and firmness to wear.
- This plastic spine board also can be used as a floatable device.
- The structure is allowed X-rays because it's completely translucent.
- It is compatible with most head immobilization devices and strap mechanisms.
- It is mainly used for hospitals, sports, ambulance and outdoors to carry patients and wounded person.



YXH-1A6C



YXH-1A6D



YXH-1A6E



YXH-1A6F

## Technical Data

Model	Product Size (L x W x H)	Packing Size (1 pc)	Load Bearing	N.W. (1 pc)	G.W.
YXH-1A6C	184 x 46 x 5 cm	188 x 47 x 6 cm	≤ 159 kg	7 kg	8.8 kg
YXH-1A6D	185 x 41 x 5 cm	188 x 43 x 7 cm	≤ 159 kg	6.6 kg	8.2 kg
YXH-1A6E	183 x 45 x 6 cm	188 x 47 x 8 cm	≤ 159 kg	7 kg	8.8 kg
YXH-1A6F	185 x 46 x 6.5 cm	188 x 48 x 8 cm	≤ 159 kg	8 kg	9.5 kg

# Spine Board

## Detailed Product Description

- This spine board with safety belts is made of HDPE material with no discharge contaminator, and firmness to wear.
- This plastic spine board also can be used as a floatable device.
- The structure is allowed X-rays because it's completely translucent.
- It is compatible with most head immobilization devices and strap mechanisms.
- It is mainly used for hospitals, sports, ambulance and outdoors to carry patients and wounded person.



YXH-1A6G



YXH-1A6K

## Technical Data

Model	Product Size (L x W x H)	Packing Size (1 pc)	Load Bearing	N.W. (1 pc)	G.W.
YXH-1A6G	137 x 34 x 4 cm	139 x 36 x 6 cm	≤ 159 kg	4.5 kg	5.5 kg
YXH-1A6K (big)	183 x 45 x 5.5 cm	185 x 46 x 7 cm	≤ 159 kg	8 kg	10 kg
YXH-1A6K (small)	119 x 32 x 5 cm	185 x 46 x 7 cm	≤ 159 kg	3 kg	6 kg

## Spine Board

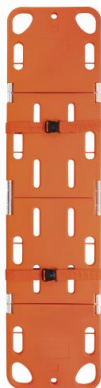
### Detailed Product Description

- This spine board with safety belts is made of HDPE material with no discharge contaminator, and firmness to wear.
- This plastic spine board also can be used as a floatable device.
- It is compatible with most head immobilization devices and strap mechanisms.
- It is mainly used for hospitals, sports, ambulance and outdoors to carry patients and wounded person.



This spine board is two-folded,  
easy for operation and storage.

YXH-1A6B



This spine board is four-folded,  
easy for operation and storage.

YXH-1A6M

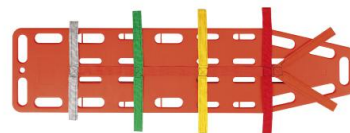
### Technical Data

Model	Product Size (L x W x H)	Folding Size	Packing Size	Load Bearing	N.W. (1 pc)	G.W.
YXH-1A6B	185 x 50 x 4 cm	94 x 50 x 7 cm	98 x 18 x 54 cm (2 pcs)	≤ 159 kg	7 kg	15.8 kg
YXH-1A6M	191 x 47 x 3 cm	13 x 47 x 52 cm	55 x 50 x 16 cm (1 pc)	≤ 159 kg	8 kg	9 kg

## Spider Strap

### Detailed Product Description

- High quality 2" Nylon Webbing Belts.
- Can be cleaned for repeat use.
- Prevent further injury during medical transportation.
- Size can be adjusted by velcro.
- Can be used for hospital, sports, ambulance and outdoors carrying patients and wounded person.



[ A ]



[ B ]



[ C ]

## Life Tank

### Detailed Product Description

- The life tank is composed of HDPE hollow rope and PP belt.
- It is made of high strength engineering plastic with antiwear, enduring features, and used for sea rescue.

### YXH-1A6N



### Technical Data

Model	Product Size (L x W x H)	Packing Size	The Buoyant	Load Bearing	G.W.
YXH-1A6N	69 x 24 x 15 cm	72 x 42 x 32 cm (4 pcs)	> 150 N	≤ 159 kg	1~1.5 kg

## CPR Board

### Detailed Product Description

- CPR board have great help on the first-aid and training, enabling the patient through out the rescue process always keep the airway open the correct location, better for patient with cervical spine injuries, in the CPR process to avoid the airway open position to take the rise of the secondary damage caused by cervical spine.
- Compression plate by high-density polyethylene plastic, the surface of solid, one end of the concave to maintain the patient's head and heads off.

### YXH-1A6H



### Technical Data

Model	Product Size (L x W x H)	Packing Size	N.W.	G.W.
YXH-1A6H	60.5 x 41 x 5 cm	61 x 42 x 28 cm (5 pcs)	13 kg	15 kg

## Multifunctional Rescue Stretcher

### Detailed Product Description

- Special composite plastic material.
- It has the characters of light weight and small volume.
- It is mainly apply to sea rescue, mountain rescue and wild rescue. The military sked stretcher is convenient to carry and easy to bend in deformation.
- It have wide range of application.
- It can be used for fire emergency rescue, deep and narrow space, general assistance high-altitude rescue, chemical accident rescue, horizontal and vertical lifting.

### YXH-1A6L



### Technical Data

Model	Product Size (L x W x H)	Packing Size	Temperature Resistance	N.W. (1 pc)	G.W.
YXH-1A6L	253 x 89 x 0.5 cm	93 x 36 x 36 cm	- 20°C to 45°C	10.6 kg	11.8 kg

## Ambulance Stretcher

### Detailed Product Description

- This ambulance stretcher is low frame structure model, it is made of high-strength aluminum alloy thick-wall pipes.
- The bed surface is made of foamed cushion and the adjustable back, making the wounded feel comfortable.
- Both ends of the stretcher have opening circle which are used for transporting the patients.
- This type of stretcher is characterized by its light weight, safe usage, and easy for sterilization and clean.
- Mainly used for hospital, sports, ambulance and city roads carrying patients and wounded person.
- The bottom space of the stretcher is designed for storage of scoop stretcher.

### YXH-2A



### YXH-2B



### Technical Data

Model	High Position (L x W x H)	Packing Size (1 pc)	Max Angle of the Back	Load Bearing	N.W.	G.W.
YXH-2A	190 x 55 x 50 cm	195 x 62 x 34 cm	75°	≤ 159 kg	25.5 kg	31.5 kg
YXH-2B	190 x 55 x 50 cm	195 x 62 x 34 cm	75°	≤ 159 kg	29 kg	35 kg

## Emergency Bed

### Detailed Product Description

- This emergency bed is made of high-strength aluminum alloy thick-wall pipe; the height can adjust by handle at the head side.
- The surface can be separated from the bed body, used as a stretcher.
- It is used for carrying patients and the wounded people in the hospitals, emergency centers, and city roads.
- It is characterized by its being light, durable, antiseptic, and easy for sterilization.

### YXH-2T2



### YXH-2L2



### Technical Data

Model	High Position (L x W x H)	Low Position	Packing Size (1 pc)	Load Bearing	N.W. (1 pc)	G.W.
YXH-2T2	190 x 55 x 82.5 cm	190 x 55 x 44.5 cm	195 x 62 x 34 cm	≤ 159 kg	34 kg	41 kg
YXH-2L2	190 x 55 x 82.5 cm	190 x 55 x 44.5 cm	195 x 62 x 34 cm	≤ 159 kg	35 kg	42 kg



## Emergency Bed

### YXH-2R2

#### Detailed Product Description

- Size for full cart: full length 193 cm, full width 64 cm.
- Bed base height range: maximum height 90 cm, minimum height 50 cm.
- Basic parameter: Back section panel 0° ~ ≥ 70°.
- Loading capacity: Maximum static safe load 250 kg.  
Maximum dynamic safe load 135 kg.
- Size: 199 x 73 x 65 cm.
- N.W.: 75 kg.
- G.W.: 105 kg.



### XH-4C

#### Detailed Product Description

- Material: The cart is made of imported PP material, and imported hydraulic rise-and-fall system.
- Size: 193 x 70 x 63 ~ 93 cm.



### XH-5C

#### Detailed Product Description

- Material: The bed is made of galvanized steel tube and surface coated by electrostatic spray. The back board is made of American electrotyped board with X-ray cassette. It is equipped with the imported double hydraulic rise-and-fall system.
- Size: 210 x 82 x 72 cm.
- N.W.: 135 kg.
- G.W.: 160 kg.



## Carry Sheet

#### Detailed Product Description

- Complete with multiple carry straps and optional carry bags are made from vinyl.
- It can be folded in samll size saving storing and easy to carry.

### YXH-4E



#### Technical Data

Model	Product Size (without handle)	Folding Size	Load Bearing	N.W. (1 pc)
YXH-4E (Yellow)	203 x 80 cm	80 x 35 cm	≤ 159 kg	2.3 kg
YXH-4E (Blue)	176 x 45 cm	88 x 24 cm	≤ 204 kg	0.7 kg

## Patient Transfer

#### Detailed Product Description

- Foamed cushion surface makes the wounded feel comfortable.
- Mainly used in emergency room, gynecology and obstetrics department, X-ray room, medical ward and ICU room for patient transportation.

### YXH-8A



#### Technical Data

Model	Product Size	Folding Size	Packing Size	N.W. (5 pcs)	G.W.
YXH-8A	170 x 50 x 1.5 cm	85 x 25 x 3 cm	87 x 53 x 23 cm	13.5 kg	12.5 kg

# Ambulance Stretcher

## Detailed Product Description

- This automatic loading stretcher is made of high-strength aluminum alloy thick-wall pipes.
- The bed surface is made of foamed cushion and the adjustable back making the wounded feel comfortable.
- The stretcher is very convenient, one person is enough to send the patient to the ambulance.
- The mechanical foldaway legs are controlled by the handles on feet side of the stretcher.
- And the legs can be folded under the stretcher automatically when loading into the vehicle.
- Also the stretcher can be locked by the fixing devices when on the ambulance car.
- This type of stretcher is characterized by its being light, durable, antiseptic, easy for sterilization.

## YXH-3A



## YXH-3A5



## Technical Data

Model	High Position (L x W x H)	Low Position	Packing Size (1 pc)	Max Angle of the Back	Load Bearing	N.W. (1 pc)	G.W.
YXH-3A	190 x 55 x 92 cm	190 x 55 x 26 cm	195 x 62 x 28 cm	75°	≤ 159 kg	36 kg	43 kg
YXH-3A5	190 x 55 x 92 cm	190 x 55 x 26 cm	195 x 62 x 28 cm	75°	≤ 159 kg	39 kg	42 kg

## YXH-3A2



## YXH-3A3



## Technical Data

Model	High Position (L x W x H)	Low Position	Packing Size (1 pc)	Max Angle of the Back	Load Bearing	N.W. (1 pc)	G.W.
YXH-3A2	190 x 55 x 92 cm	190 x 55 x 26 cm	195 x 62 x 28 cm	75°	≤ 159 kg	36 kg	43 kg
YXH-3A3	190 x 55 x 92 cm	190 x 55 x 26 cm	195 x 62 x 38 cm	75°	≤ 159 kg	39 kg	42 kg

# Ambulance Stretcher

## Detailed Product Description

- This automatic loading stretcher is made of high-strength aluminum alloy thick-wall pipes.
- The bed surface is made of foamed cushion and the adjustable back making the wounded feel comfortable.
- The stretcher foldaway legs are controlled by the handles on feet side of the stretcher.
- And the legs can be folded under the stretcher automatically when loading into the vehicle.
- Also the stretcher can be locked by the fixing devices when on the ambulance car.
- This type of stretcher is characterized by its being light, durable, antiseptic, easy for sterilization.

YXH-3B



YXH-3B2



YXH-3B3



## Technical Data

Model	High Position (L x W x H)	Low Position	Packing Size (1 pc)	Max Angle of the Back	Load Bearing	N.W. (1 pc)	G.W.
YXH-3B	190 x 55 x 90 cm	190 x 55 x 25 cm	195 x 63.5 x 26.5 cm	75°	≤ 159 kg	36 kg	43 kg
YXH-3B2	190 x 55 x 90 cm	190 x 55 x 27 cm	195 x 63.5 x 26.5 cm	75°	≤ 159 kg	40 kg	47 kg
YXH-3B3	190 x 55 x 92 cm	194 x 55 x 32 cm	199 x 63 x 38 cm	75°	≤ 159 kg	53 kg	62 kg

# Ambulance Stretcher

## Detailed Product Description

- This automatic loading stretcher is made of high-strength iron alloy thick-wall pipes.
- The bed surface is made of foamed cushion and the adjustable back making the wounded feel comfortable.
- The stretcher foldaway legs are controlled by the handles on feet side of the stretcher.
- And the legs can be folded under the stretcher automatically when loading into the vehicle.
- Also the stretcher can be locked by the fixing devices when on the ambulance car.
- This type of stretcher is characterized by its being light, durable, antiseptic, easy for sterilization.

## YXH-3C



## Technical Data

Model	High Position (L x W x H)	Low Position	Packing Size (1 pc)	Max Angle of the Back	Load Bearing	N.W. (1 pc)	G.W.
YXH-3C	195 x 55 x 91 cm	195 x 55 x 30 cm	197 x 62.5 x 35.5 cm	65°	≤ 159 kg	52 kg	59 kg

## YXH-3D



## YXH-3D2



## Technical Data

Model	High Position (L x W x H)	Low Position	Packing Size (1 pc)	Max Angle of the Back	Load Bearing	N.W. (1 pc)	G.W.
YXH-3D	196 x 55 x 97 cm	196 x 55 x 34 cm	198 x 62 x 38 cm	65°	≤ 159 kg	36 kg	42.8 kg
YXH-3D2	196 x 55 x 97 cm	196 x 55 x 37 cm	198 x 62 x 38 cm	75°	≤ 159 kg	44 kg	50.6 kg

# Ambulance Stretcher

## Detailed Product Description

- Can be converted into a chair.
- The head part can be adjusted according to different requirements.
- Suitable to transfer the patients in the limited place, such as lift in the hospital, ambulance, city road etc.
- Made of aluminum alloy material, characterized by its being anti-corrosion, use-safely and easy for sterilization and cleaning.

### YXH-3E



## Technical Data

Model	High Position (L x W x H)	Low Position	Packing Size (1 pc)	Max Angle of the Back	Load Bearing	N.W. (1 pc)	G.W.
YXH-3E	190 x 55 x 86 cm	194 x 55 x 28 cm	199 x 62.5 x 26.5 cm	85°	≤ 159 kg	30 kg	36 kg

## Detailed Product Description

- Can be converted into a chair.
- The head part can be adjusted according to different requirements.
- Suitable to transfer the patients in the limited place, such as lift in the hospital, ambulance, city road etc.
- Made of 301 stainless steel material, characterized by its being anti-corrosion, use-safely and easy for sterilization and cleaning.

### YXH-3E3



## Technical Data

Model	Product Size (L x W x H)	Folding Size	Packing Size (1 pc)	Load Bearing	N.W. (1 pc)	G.W.
YXH-3E3	190 x 56 x 98 cm	195 x 56 x 40 cm	200 x 64 x 39 cm	≤ 180 kg	50 kg	56.8 kg



# Ambulance Stretcher

## Detailed Product Description

- The mortuary cot height can be adjusted.
- This cot is very convenient, one person is enough to send the body.
- The bed surface is made of foamed cushion.
- This cot is equipped with safety belts, which must be locked when transferring the bodies.

### YXH-3F



### YXH-3G



## Technical Data

Model	High Position (L x W x H)	Low Position	Packing Size (1 pc)	Adjusted Size Middle Size	Load Bearing	N.W. (1 pc)	G.W.
YXH-3F	198 x 55 x 87 cm	198 x 55 x 28 cm	200 x 63 x 35 cm	-	≤ 159 kg	26 kg	35 kg
YXH-3G	190 x 55 x 89 cm	190 x 55 x 41.5 cm	195 x 62 x 42 cm	190 x 55 x 72 cm	≤ 159 kg	31.8 kg	38.6 kg

## Detailed Product Description

- This automatic loading stretcher is made of high-strength stainless steel thick-wall pipes.
- The bed surface is made of foamed cushion and the adjustable back making the wounded feel comfortable.
- The stretcher foldaway legs are controlled by the handles on feet side of the stretcher.
- And the legs can be folded under the stretcher automatically when loading into the vehicle.
- Also the stretcher can be locked by the fixing devices when on the ambulance car.
- This type of stretcher is characterized by its being light, durable, antiseptic, easy for sterilization.

### YXH-3H



## Technical Data

Model	High Position (L x W x H)	Low Position	Packing Size (1 pc)	Max Angle of the Back	Load Bearing	N.W. (1 pc)	G.W.
YXH-3H	192 x 56 x 101 cm	196 x 56 x 40 cm	200 x 64 x 39 cm	75°	≤ 159 kg	52.5 kg	59.5 kg

# Ambulance Stretcher

## Detailed Product Description

- This automatic loading stretcher is made of high-strength aluminum alloy thick-wall pipes.
- The bed surface is made of foamed cushion and the adjustable back making the wounded feel comfortable.
- The stretcher foldaway legs are controlled by the handles on feet side of the stretcher.
- And the legs can be folded under the stretcher automatically when loading into the vehicle.
- Also the stretcher can be locked by the fixing devices when on the ambulance car.
- This type of stretcher is characterized by its being light, durable, antiseptic, easy for sterilization.

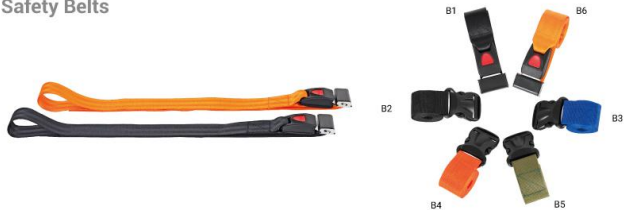
YXH-3K



## Technical Data

Model	High Position (L x W x H)	Low Position	Packing Size (1 pc)	Load Bearing	N.W. (1 pc)	G.W.
YXH-3K	198 x 55 x 97 cm	201 x 55 x 32 cm	205 x 62 x 36 cm	≤ 159 kg	52.6 kg	60 kg

## Safety Belts



## Nylon Fabric



# Scoop Stretcher

## Detailed Product Description

- Made of high-strength aluminum alloy materials.
- Detachable design to transfer fractured and serious patients.
- One hinge device is set in each end of the stretcher used to divide main frame into two pieces.
- Strengthen the patients at original place to reduce the further hurt of the patients.
- Without moving the patient, the operators can operate the stretcher easily.
- Adjust length according to patients' body.
- Equipped with a narrow frame structure of foot.
- Mainly used for hospitals, sports, ambulance carrying patients and wounded person.

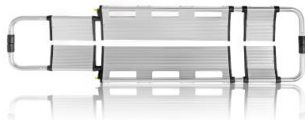
YXH-4A



YXH-4B



Folded



Folded



4 colors to choose

## Technical Data

Model	Product Size (L x W x H)	Folding Size	Packing Size (1 pc)	Load Bearing	N.W. (1 pc)	G.W.
YXH-4A	168 x 44 x 7 cm	120 x 44 x 9 cm	170 x 45 x 7 cm	≤ 159 kg	7.4 kg	10 kg
YXH-4B	168 x 44 x 7 cm	120 x 44 x 9 cm	170 x 45 x 7 cm	≤ 159 kg	7.3 kg	10 kg

## Detailed Product Description

- Made of high-strength HDPE.
- Detachable design to transfer fractured and serious patients.
- One hinge device is set in each end of the stretcher used to divide main frame into two pieces.
- Strengthen the patients at original place to reduce the further hurt of the patients.
- Without moving the patient, the operators can operate the stretcher easily.
- Adjust length according to patients' body.
- Equipped with a narrow frame structure of foot.
- Mainly used for hospitals, sports, ambulance carrying patients and wounded person.
- Patients won't feel too hot or too cold on thermally-treated polymer surface.
- The surface is easy to clean and impervious to fluids.

YXH-4D



## Technical Data

Model	Product Size (L x W x H)	Folding Size	Packing Size (1 pc)	Load Bearing	N.W. (1 pc)	G.W.
YXH-4D	161 x 45 x 6 cm	120 x 44.5 x 7 cm	165 x 47 x 8 cm	≤ 159 kg	8 kg	11 kg

## Stair Stretcher

### Detailed Product Description

- Made of high-strength aluminum alloy materials.
- Mainly used in transferring patient to go up and down stairs.

YXH-5A



YXH-5B



YXH-5C



YXH-5D



### Technical Data

Model	Product Size	Folding Size	Packing Size (1 pc)	Load Bearing	N.W. (1 pc)	G.W.
YXH-5A	84 x 52 x 92 cm	91 x 19 x 51 cm	96 x 54 x 16 cm	≤ 159 kg	9 kg	11 kg
YXH-5B	84 x 52 x 91 cm	97 x 52 x 17 cm	96 x 54 x 17 cm	≤ 159 kg	9.5 kg	11.5 kg
YXH-5C	84 x 60 x 98 cm	98 x 60 x 20 cm	100 x 61 x 20 cm	≤ 159 kg	14 kg	15.5 kg
YXH-5D	84 x 493 x 100 cm	100 x 55 x 27 cm	103 x 56 x 30 cm	≤ 159 kg	10.6 kg	12 kg

## Stair Stretcher

### Detailed Product Description

- Made of high-strength aluminum alloy materials.
- Mainly used in transferring patient to go up and down stairs.

YXH-5E



YXH-5N



YXH-5K



YXH-5G



### Technical Data

Model	Product Size	Folding Size	Packing Size (1 pc)	Load Bearing	N.W. (1 pc)	G.W.
YXH-5E	92 x 52 x 105 cm	114 x 52 x 26 cm	115 x 54 x 27 cm	≤ 159 kg	12 kg	13.5 kg
YXH-5N	105 x 47 x 99 cm	98 x 47 x 25 cm	91 x 49 x 25 cm	≤ 159 kg	11 kg	12.5 kg
YXH-5K	84 x 59 x 97 cm	99 x 59 x 23 cm	103 x 54 x 28 cm	≤ 159 kg	14 kg	15 kg
YXH-5G	84 x 50 x 100 cm	100 x 50 x 28 cm	103 x 54 x 28 cm	≤ 159 kg	14 kg	15.5 kg

## Stair Stretcher

### Detailed Product Description

- Designed with special track structure so as to give more convenience and safety for transportation.
- Four wheels are easy for moving on grounds.
- The model has two pieces of belts to strengthen the patients' safety during transportation.
- Mainly used in hospitals, emergency centers, moving up and down the stairs in emergency.
- Only one person can operate this stretcher.
- Made of high strength aluminum alloy materials.
- The size of castor:  $\Phi$  125 / 75 mm.

### YXH-5H



### Technical Data

Model	Product Size (L x W x H)	Folding Size	Packing Size (1 pc)	Load Bearing	N.W. (1 pc)	G.W.
YXH-5H	163 x 51 x 118 cm	106 x 51 x 30 cm	109 x 55 x 31 cm	≤ 159 kg	21 kg	24 kg

## Stair Stretcher

### Detailed Product Description

- Designed with special track structure so as to give more convenience and safety for transportation.
- Four wheels are easy for moving on grounds.
- The model has two pieces of belts to strengthen the patients' safety during transportation.
- Mainly used in hospitals, emergency centers, moving up and down the stairs in emergency.
- Only one person can operate this stretcher.
- Made of high strength aluminum alloy materials.
- The size of castor:  $\Phi$  125 / 75 mm.

### YXH-5L



### Technical Data

Model	Product Size (L x W x H)	Folding Size	Packing Size (1 pc)	Load Bearing	N.W. (1 pc)	G.W.
YXH-5L	165 x 51 x 118 cm	108 x 51 x 30 cm	116 x 58 x 32 cm	≤ 159 kg	33 kg	44 kg



# Stair Stretcher

## Detailed Product Description

- Designed with track structure, more convenient and safe for transportation.
- Four wheels are easy for moving on ground.
- Just need 3-4 hours to re-charge, can climb 80 floors. 30 seconds to finish 1 floor.
- One person is enough to operate it.
- Made of high strength aluminum alloy materials.
- With light weight, easy folding, easy to operate etc.
- The motor is brushless motor, and there are 3 speed: slow, medium and fast.
- The lithium battery is light weight and easy to disassemble.
- The chair need small storage space after folding, and suitable for private car.

## YXH-5M2



## Technical Data

Model	Product Size (L x W x H)	Folding Size	Packing Size (1 pc)	Load Bearing	N.W. (1 pc)	G.W.
YXH-5M2	164 x 62 x 90 cm	109 x 36 x 44 cm	118 x 50 x 42 cm	≤ 160 kg	38 kg	50 kg

# Stair Stretcher

## Detailed Product Description

- Mainly used for carrying patients and wounded person.
- The structure can be folded and the stretcher structure could get smaller.
- The back of the stretcher designed with two folded handles.
- Under the front of the stretcher with two flexible uplift rod.
- The stretcher is with two pieces of belts to approve the patient's safety during transport process.
- It is made of high-strength aluminum alloy materials.
- It is characterized by its being light-weight, small-sized, easy-carried, use-safety and easy for sterilization and clean.

## YXH-5P



## Technical Data

Model	Product Size (L x W x H)	Folding Size	Packing Size (1 pc)	Load Bearing	Battery Capacity	Motor Power	Charging Time
YXH-5P	126 x 110 x 63 cm	110 x 36 x 63 cm	116 x 70 x 39 cm	≤ 180 kg	DC 29.4 V 18.2 Ah	200 W DC 24 V	6 hours

## Stair Stretcher

### Detailed Product Description

- The materials of stair climbing hand truck with lift is made of high-strength aluminum alloy.
- Extra wide sliding system for safer and easier transfer.
- The stair climbing hand truck with lift are mainly used for high-rise buildings haul goods up and down the stairs, only one person can use.

### YXH-5F



### Technical Data

Model	Product Size (L x W x H)	Folding Size	Packing Size (1 pc)	Load Bearing	N.W. (1 pc)	G.W.
YXH-5F	164 x 48.5 x 88 cm	106 x 48 x 35 cm	110 x 52 x 31 cm	≤ 200 kg	31 kg	42 kg

## Stair Stretcher

### Detailed Product Description

- Designed with special track structure so as to give more convenience and safety for transportation.
- Four wheels are easy for moving on grounds.
- The model has two pieces of belts to strengthen the patients' safety during transportation.
- Mainly used in hospitals, emergency centers, moving up and down the stairs in emergency.
- Only one person can operate this stretcher.
- Made of high strength aluminum alloy materials.
- The size of castor: Φ 145 / 185 mm.

### YXH-5L-1



### Technical Data

Model	Product Size (L x W x H)	Folding Size	Packing Size (1 pc)	Load Bearing	N.W. (1 pc)	G.W.
YXH-5L-1	168 x 53 x 105 cm	108 x 53 x 27 cm	116 x 55 x 31 cm	≤ 159 kg	33 kg	44 kg

## Basket Stretcher

### Detailed Product Description

- This stretcher is made with an eye on a very range of emergency situations, and it's sturdy and flexible for use in all types of aid in special situations.
- Its reliable fittings enable first-aid personnel to operate rapidly and safely.
- With its special sling equipment, the stretcher is ideal for lifting and transporting by helicopter.
- It has an adjustable feet-securing mechanism, safety belts and a mattress.
- It is also designed for to be secured inside the helicopter.
- All the materials used have dimensions suitable to work and they are fire-proof.
- They don't release any toxic or polluting substances and they are protected to obtain high resistance to wear and corrosion.

### YXH-6A



### YXH-6B



### Technical Data

Model	Product Size (L x W x H)	Folding Size	Packing Size (1 pc)	Load Bearing	N.W. (1 pc)	G.W.
YXH-6A	218 x 62 x 16 cm	-	220 x 67 x 20 cm	≤ 200 kg	16 kg	20 kg
YXH-6B	218 x 62 x 16 cm	124 x 62 x 20 cm	130 x 65 x 23 cm	≤ 200 kg	20.5 kg	23.5 kg

## Stainless Steel Basket Stretcher

### Detailed Product Description

- It is made with an eye on a very wide range of special emergency situations, such as in the mountains, air and at sea.
- It is sturdy and flexible to use, its quick reliable fitting enable first-aid person to operate it rapidly and safely.
- With its special sling equipment, the stretcher is ideal for lifted and transported by helicopter.
- It has an adjustable feet-securing mechanism, two safety belts and a mattress.
- The basket stretcher is made of stainless steel tube and net.
- It will not rust or it won't go rust cause additional harm to the patient.
- It is stronger than common basket stretcher.

### YXH-6C



### YXH-6D



### Technical Data

Model	Product Size (L x W x H)	Folding Size	Packing Size (1 pc)	Load Bearing	N.W. (1 pc)	G.W.
YXH-6C	218 x 62 x 20 cm	-	220 x 65 x 24 cm	≤ 350 kg	13 kg	18 kg
YXH-6D	218 x 62 x 20 cm	113 x 62 x 27 cm	128 x 70 x 30 cm	≤ 350 kg	18 kg	21 kg

# Stretcher Base

## Detailed Product Description

- This stretcher base is suitable for ambulance car.
- It is designed for convenient up and down of the ambulance stretcher.
- It is made of stainless steel material, scoop stretcher and spine board can be deposited in the bottom.
- It is easy for using.

### YXH-7A



Stainless Steel



## Detailed Product Description

- This stretcher base is suitable for ambulance car.
- It is designed for convenient up and down of the ambulance stretcher.
- It is made of Aluminum Alloy material, scoop stretcher and spine board can be deposited in the bottom.
- It is easy for using.

### YXH-7B(A)



Aluminum Alloy



### YXH-7B(B)



Aluminum Alloy

## Technical Data

Model	Product Size (L x W x H)	Packing Size (1 pc)	Load Bearing	N.W. (1 pc)	G.W.
YXH-7A	208 x 63.5 x 44 cm	238 x 69 x 16 cm	≤ 159 kg	30 kg	33 kg
YXH-7B(A)	206 x 60 x 46 cm	238 x 69 x 16 cm	≤ 159 kg	40 kg	43.5 kg
YXH-7B(B)	203 x 58 x 44 cm	238 x 69 x 16 cm	≤ 159 kg	26 kg	30 kg

### YXH-7C



## Technical Data

Model	Packing Size (5 pcs)	N.W. (5 pcs)	G.W.
YXH-7C	87 x 7 x 5 cm	35 kg	36 kg

## Pediatric Immobilization Strap

### Detailed Product Description

- It is made of PVC folder mesh material, which is non-toxic and easy to clean.
- The straps are designed to immobilize children weighted between 3.2 kg to 18 kg.
- Three restraint straps make emergency process easier and more safe.
- With fully-adjustable, composed of five belts, the belts can firmly fix the child during transportation.
- It is widely used in hospital, home care center, home and emergency center.

### YXH-7M



### Detailed Product Description

- It is made of nylon fabric, internal board is anti-corrosion.
- This product is applied to child's shoulder, chest, abdominal and leg's fixing, makes the child's heart comfortable and respiratory smooth.
- The size can be adjusted by safety belts.
- This stretcher can be applied to children height between 70 cm to 130 cm, and weight between 9 kg to 40 kg.
- The straps for leg and knee fixation can be used separately.
- It can be used in X-ray and CT scan.

### YXH-7E



## Vacuum Splint

### Detailed Product Description

- For the immediate immobilization and rapid fixation of injured limbs.
- Made of durable TPU which can be shaped on the injured limb within seconds by deflate the air in the splint.
- By deflating the air in the splint, the limb is stabilized and immobilized.
- The valve is open when turned to the right and closed when turned to the left. more than 72hrs vacuum guarantee.
- MRI, CT, X-ray compatible and radiolucent.

### YXH-12



## Carbon Fiber Leg Traction Splint

### YXH-8D

### Detailed Product Description

- The fracture is made of carbon fiber and aluminum alloy.
- The leggings tape is made of nylon material.
- The traction length is adjustable.
- It is used to alleviate leg organizations pressure so as to avoid bleeding and secondary damage to the nerves, blood vessels, bones and muscles.



### Technical Data

Model	Product Size	Packing Size	N.W. (1 pc)	G.W.
YXH-12	1	61 x 40 x 26 cm	4 kg	5 kg
YXH-8D	136 x 22 x 18 cm	30 x 15 cm	6.5 kg	7.3 kg



## Vacuum Stretcher

### YXH-7D

#### Detailed Product Description

- 1pc vacuum immobilization stretcher, 1 pc foot pump, 1pc carry bag.



#### Technical Data

Model	Product Size (width top x middle x bottom)	Packing Size (1 pc)	Load Bearing	N.W. (1 pc)	G.W.
YXH-7D	80 x 88 x 80 cm	88 x 47 x 29 cm	≤159 kg	9 kg	10 kg

## Life Saving Hammer

### XH-24

#### Detailed Product Description

- Material: Carbon Steel and ABS Zincification.
- 2-in-1 emergency-escape tool provides a window hammer and seat-belt cutter.
- Use wide range: Car Crash, Fire, Flood, Tornado, Perhaps Even An Earthquake.
- Its bright red body makes it easy to find.



## Extrication Device

### YXH-7H

#### Detailed Product Description

- Surrounding designed to fix the patient. Applicable for patients injured in rib.
- Strips are in three colors, which can be quickly fixed.
- It is equipped with nylon buckles and safety belts.
- When used simultaneously with a neck fixation, the patient should be in sitting position, then be transferred to a PE stretcher.



#### Technical Data

Model	Packing Size (L x W x H)	N.W. (4 pcs)	G.W.
YXH-7H	86 x 26 x 35 cm (4 pcs)	13.2 kg	14.2 kg

## Neil-Robertson stretcher

### YXH-7N

#### Detailed Product Description

- Applied to all kinds of ships, field working, mine operation and architecture industries.
- In accordance with the requirements of Neil-Robertson stretcher of the International Marine Medical Guide, compiled by WHO.
- Frame: Hardwood.
- Outer Material: Canvas.



#### Technical Data

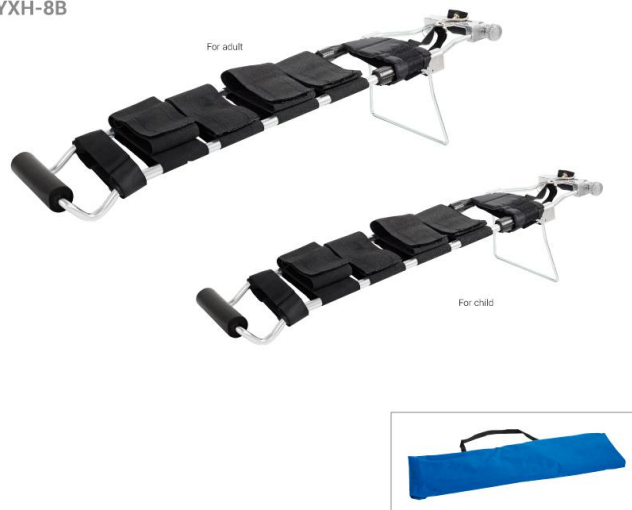
Model	Packing Size (L x W x H)	Horizontal Safety	Vereical Safety	N.W. (1 pc)	G.W.
YXH-7N	156 x 18 x 18 cm (1 pc)	120 kg	120 kg	6.5 kg	8 kg

# Traction Splint Set

## Detailed Product Description

- Relieve the tissue pressure on fractured leg avoiding further hemorrhages, shock and secondary nervous, vascular, bone and muscular damages.
- Made of aluminum alloy materials.
- Adjustable length, and nylon leg straps automatic traction mechanism.
- Set of adult and pediatric sizes together.
- With carry bag.

## YXH-8B



## Technical Data

Model	Product Size (L x W x H)	Folding Size	Packing Size (1 pc)	N.W (1 pc)	G.W.
YXH-8B (Adult)	134 x 19 x 21 cm	93 x 20 x 7 cm	96 x 24 x 8 cm	2 kg	3 kg
YXH-8B (Child)	125 x 19 x 21 cm	90 x 19 x 7 cm	88 x 22 x 8 cm	1.8 kg	2.8 kg

# Splint Kit

## YXH-9

### Detailed Product Description

- X-ray translucent and MRI compatible.
- Set of six size together.
- With carry bag.



## YXH-10

### Detailed Product Description

- Made of neoprene.
- Set of five sizes together.
- With carry bag.



## Technical Data

Model	Packing Quantity	Packing Size	N.W (1 pc)	G.W.
YXH-9	1	88 x 35 x 18 cm	2 kg	2.5 kg
YXH-10	5	57 x 25 x 26 cm	6.5 kg	7.3 kg

## Air Splint

### YXH-9A

#### Detailed Product Description

- This multifunctional nursing splint can be used for both the left and right limbs at same time.
- The kit including : full leg, half leg, foot and ankle, full arm, half arm, hand and wrist.
- It is made of leather.
- The splints are suitable for X-ray and MRI.



#### Technical Data

Model	Packing Size (L x W x H)	N.W. (10 sets)	G.W. (10 sets)
YXH-9A	46 x 33 x 32 cm (10 sets)	12 kg	13 kg

## TPU Splint Kit

#### Detailed Product Description

- It can be used in X-rays and CT scan.
- Adopts high quality and durable TPU material. filled with harmless EPS particulate material.

### YXH-9B



## Rolling Splints

#### Detailed Product Description

Colors: Green & grey, Red & Grey, Yellow & grey, Orange & blue, Yellow & blue.

### XH-15A



#### Technical Data

Model	Length	Width
XH-15A-100	100 cm	11 cm
XH-15A-92	92 cm	11 cm
XH-15A-61	61 cm	11 cm

Model	Length	Width
XH-15A-50	50 cm	11 cm
XH-15A-46	46 cm	11 cm

## Finger Splints

#### Detailed Product Description

- Made of soft aluminum and foam, non-toxic, non-irritating odor.
- X-ray translucent.

### XH-15B



# Tourniquet

## XH-T01

### Detailed Product Description

- Safe and effective device for controlling life-threatening extremity bleeding.
- Effectively applied over clothing as high on the arm or leg as possible.
- Must NOT be applied over solid objects within the clothing.
- As soon as the situation permits, the injured limb should be evaluated and the tourniquet re-positioned 2-3 inches above the injury directly to the skin.



## XH-T02

### Buckle Tourniquet

### Technical Data

SIZE	Color	MOQ
2.5 x 45 cm	blue, red, green	500 pcs



# Pelvic Sling

## XH-T03

### Detailed Product Description

- Force control bucket maintains correct force.
- Click provides clear feedback to confirm correct and safe application.
- Standard size fits 98% of population.
- Nylon straps with loop and hook makes quick and easy fastening.
- Easy to clean and disinfect and reusable.



### Technical Data

SIZE	Main body length	Main body width	Yellow strap length	Back strap length	package size	N.W.
S	90 cm	18 cm	19 cm	56 cm	20 x 8 x 17 cm	320 g
M	108 cm	18 cm	19 cm	56 cm	20 x 8 x 17 cm	340 g
L	123 cm	18 cm	19 cm	56 cm	20 x 8 x 17 cm	350 g

# Anesthetic Laryngoscope

## XH-S01



## XH-S02



## XH-S03



## XH-S04



### Detailed Product Description

- EZ Vision Economical Fiber optic laryngoscope blade.
- A Handle:
  - 1.Excellent produce technology and quality, feel is good.
  - 2.lamp-socket located in the top of the handle,offering the best protection for the High sensitivity halogen bulbs,extend the bulb's use life.
  - 3.The precision connection technology between len and handle guaranteed the light not loss.
- B blades:
  - 1.Super hardness metal blades with high safety.
  - 2.The only 3.5 mm optical fibre can supply high light source and avoid airway trauma because of high temperature during intubation.
  - 3.The Green plastic interface provide high hardness and strength, special green logo is applicable to all optical fiber handles which fit with ISO standard.

### Detailed Product Description

- Be made of 304 medical stainless steel.
- More lighter blades make doctor operate easily.
- Advanced design, Beautiful appearance makes it is more better than foreign laryngoscope.
- The stainless steel laryngoscope come out, can totally replace the traditional laryngoscopy, make the domestic laryngoscope to a new step.

## Head Immobilizer

### Detailed Product Description

- Made of high-density plastic materials, large ear holes for monitoring the patient's ear canal.
- It can be used with scoop stretcher and spine board at the same time.
- Minimal interference with X-ray, MRI, or CT scanning procedures.
- Water-resistant plastic coating makes it easy to clean and prevents bacterial growth on it.

XH-16A



XH-16B



### Technical Data

Model	Packing Size (L x W x H)	N.W.	G.W.
XH-16A (Adult)	56 x 45 x 60 cm (8 pcs)	7.2 kg (8 pcs)	10 kg (8 pcs)
XH-16B (Child)	72 x 58 x 36 cm (12 pcs)	6.5 kg (12 pcs)	10 kg (12 pcs)

## Lifeguard

XH-16C



Product Size: 40 inch / 50 inch / 53 inch

## Cervical Collar

### Detailed Product Description

- Soft foam is slightly contoured for a comfortable fit.
- Covered with 100% cotton stockinet and a Velcro closure.
- Loop contact closures for easier use.
- Available in low, medium, high position.
- Adjustable size designed for using on a wide range of patients.
- The foam cervical collar is used for cervical injuries requiring non-rigid support and limited mobility.
- May also be used as an aid for the relief of pain associated with neck muscle spasms or whiplash injuries.

XH-17



XH-19



XH-20 For Adult



XH-20 For Child



### Technical Data

Model	Packing Size	N.W.	G.W.
XH-17 (Adult)	60 x 40 x 30 cm (50 pcs)	6.87 kg	7.85 kg
XH-17 (Child)	50 x 40 x 35 cm (100 pcs)	7.4 kg	8.38 kg
XH-19	83 x 43 x 40 cm (50 pcs)	6 kg	7 kg
XH-20 (Adult)	58.5 x 20 x 32 cm (20 pcs)	3.0 kg	3.6 kg
XH-20 (Child)	47 x 18 x 32 cm (20 pcs)	1.9 kg	2.4 kg

## Emergency Blanket

### XH-18

#### Detailed Product Description

- It is characterized by its being small-sized, light-weighted, heat preservation and easy-carried.
- It is mainly used for mountain climbing, fire fighting, rescue and military in the wild.
- Material: PET Aluminum.



#### Technical Data

Model	Product Size	Packing Size (250 pcs)	Color	G.W. (250 pcs)
XH-20	210 x 160 cm	47 x 34 x 24 cm	Silver & Gold	16 kg

## Emergency Scissor

### XH-21



Can be used to break the glass for emergency

### XH-22



## CPR Mask

### YXH-M01

#### Detailed Product Description

- Non-reusable, single use only.
- Foldable mask design.
- High transparency for better visualization.
- Latex-free 100% medical level PVC material.
- Additional accessories and customized label are available:  
Alcohol pad, PVC glove, flexible tube and etc.



## Manual Suction

### YXH-MSR



Child Catheter connection  
Exter Diameter:  $\Phi$  9 mm  
Length: 21 cm



Adult Catheter connection  
Exter Diameter:  $\Phi$  17 mm  
Length: 21 cm

#### Technical Data

Model	Packing Size (25 pcs)	Quantity	N.G.	G.W.
YXH-MSR	41 x 52 x 44 cm	25	10 kg	11 kg



# Manual Resuscitators

## Detailed Product Description

- Single use only.
- Built-in pressure relief valve. (60 cm H<sub>2</sub>O for adults 40 cm H<sub>2</sub>O for child and infant)
- The set includes oxygen reservoir bag, PVC mask and oxygen tubing.
- 100% medical level PVC material.
- Latex-free components.
- All-in-one intake valve connects to oxygen reservoir bag directly.
- Additional accessories (Airway, mouth opener) and customized label are optional.
- Built-in 30 mm exhale port for PEEP or filter attachment.

### XH-KB04

For adult (PVC material)



### XH-KB05

For child (PVC material)



### XH-KB06

For infants (PVC material)



## Technical Data

Model	Packing Size	Quantity	G.W.
XH-KB04	57 x 33.5 x 46 cm	12	10.6 kg
XH-KB05	57 x 33.5 x 46 cm	12	8.8 kg
XH-KB06	57 x 33.5 x 46 cm	12	8.4 kg

Model	Packing Size	Quantity	G.W.
XH-KB07	57 x 33.5 x 46 cm	12	10.7 kg
XH-KB09	57 x 33.5 x 46 cm	12	9 kg
XH-KB10	57 x 33.5 x 46 cm	12	8.4 kg

### XH-KB07

For adult (Silicone material)



## Detailed Product Description

- Autoclave to 134 C helping to prevent cross infection and contamination .
- Built-in 40 cm H<sub>2</sub>O pressure relief valve.
- Latex-free high grade medical silicone material.
- All-in-one intake valve connects to oxygen reservoir bag directly.
- Additional accessories (Airway, mouth opener) and customized label are optional.



### XH-KB09

For child (Silicone material)



### XH-KB10

For infants (Silicone material)



# First Aid Kit

## XHE-01



### Detailed Product Description

- The first aid box is made of polypropylene (PP).
- It is with wall bracket which can secure the box to the wall. And the two swivel catches are set for closing security.
- Recommended use: business companies, factories, building yards, labs, schools and etc.

### Technical Data

Model	Packing Size	MOQ	Qty / Ctn	CBM / Ctn	Unit	N.W. (1 pc)	G.W.
XHE-01	46 x 33 x 35 cm	200	2	0.05	set	6.2 kg	7.2 kg
XHE-02	48 x 27.5 x 43 cm	1000	10	0.06	set	8 kg	9 kg

## XHE-02



### Detailed Product Description

- The first aid box is made of strong ABS plastic which is shiny smooth and easy to clean.
- The kit contains a neoprene seal which makes the kit dustproof.
- The wall bracket is able to secure the kit on a common house wall.
- The internal partitions permit a more flexible and scientific item arrangement. Additionally, two swivel catches are set for closing security.
- Recommended use: business companies, factories, building yards, labs, schools and etc.

# First Aid Kit

## Contents List (XHE-01)

01	First Aid Booklet	1 pc
02	Safety Pins	10 pcs
03	CRP Mask	1 pc
04	Syringe	1 pc
05	Cleansing Wipes	7 pcs
06	Soap Wipe	10 pcs
07	Emergency Blanket	2 pcs
08	Triangular Bandage	4 pcs
09	Burn Dressing	2 pcs
10	Wound Dressing	1 pc
11	Strap Tourniquets	1pc
12	Instant Cold Pack	1 pc
13	Sterile Scalpel	1 pc
14	Adhesive Plaster	100 pcs
15	Boston, Roll Splint	1 pc
16	Scissors	1 pc
17	Adhesive Tape	3 pcs
18	Zinc Oxide Adhesive Plaster	1 pc
19	Sterile Gauze Swab	20 pcs
20	Cotton Ball	5 pcs
21	Latex Gloves	6 pairs
22	ABD Pad	2 pcs
23	Elastic Bandage	2 pcs
24	Conforming Bandage	3 pcs
25	Conforming Bandage	2pcs
26	Sterile Eye Pad	5pcs
27	Alcohol Pre Pad	20 pcs
28	Tweezers	2 pcs
29	Plastic Kidney Dish	1 pc
30	Lancet	1 pc
31	ABS First Aid Box	1 pc

## Contents List (XHE-02)

01	First Aid Booklet	1 pc
02	Safety Pins	10 pcs
03	Cleansing Wipe	3 pcs
04	Soap Wipe	3 pcs
05	Adhesive Plasters	10 pcs
06	Scissors	1 pc
07	Adhesive Tape	1 pc
08	Sterile Gauze Swab	2 pcs
09	Rayon Balls	5 pcs
10	Confirming Bandage	2 pcs
11	Confirming Bandage	1 pc
12	Tweezers	1 pc
13	First Aid Box size : 25 x 18.5 x 9 cm	1 pc

## General Aluminum First-aid Kit

XHE-03



Contents

No.	Description	Specification	Qty
01	Oxygen Cylinder	2.0 Litre	1set
02	Manual Resuscitator	PVC for Adult	1set
03	Sphygmomanometer	-	1set
04	Stethoscope	-	1set
05	Thermometer	mercury	1
06	Manual Suction	R Type	1set
07	Aerate Equipment for Throat	Size3.4.7.8 (disposable)	4
08	Mouth-to-mouth breathing mask	-	2
09	Anaesthetic Laryngoscope	curved (L.M.S)	1set
10	Equipment for opening Mouth	-	1
11	Tongue Forceps	-	1
12	Lamina for Pressing Lingua	Metal	1
13	Plexor	-	1
14	Endotracheal Tube	Size3.4.7.8 (disposable)	4
15	Catheter	Size 14, 16	2
16	Gauze Bandage	10 x 500 cm	4
17	Cravat	100 x 100 x 140 cm	2
18	Compressed Gauze	50 x 80 cm	2
19	Medicinal Gauze Pieces	7.5 x 7.5 cm	10
20	First-aid Carpet	130 x 210 cm	1
21	Rolling Plywood	92 x 11 cm	2
22	Tourniquet	-	1
23	Breathe-freely Adhesive Tape	1.25 x 200 cm	2
24	Medicinal Gloves	Size 7 or 7.5	1
25	Alcohol Cotton	-	10
26	Iodine Cotton Swabs	5 pcs/pac.	4
27	Scissor for Operation	12.5 cm	1
28	Dressing Clamp	12.5 cm	1
29	Flashlight	-	1
30	Emergency manual	-	1
31	First aid box	55.7 x 39 x 20 cm	1

## First Aid Kit

XHE-04



Empty Bag

XHE-05



Contents

No.	Description	Specification	Qty
01	Oxygen Cylinder	2 Litre	1set
02	Manual Resuscitator	PVC for Adult	1set
03	Sphygmomanometer	-	1set
04	Stethoscope	-	1set
05	Thermometer	Mercury	1
06	Manual Suction	R Type	1set
07	Anaesthetic Laryngoscope	Curved (L.M.S)	1set
08	Equipment for opening Mouth	-	1
09	Tongue Forceps	-	1
10	Lamina for Pressing Lingua	Metal	1
11	Plexor	-	1
12	Endotracheal Tube	Size3.4.7.8 (disposable)	4
13	Gauze Bandage	10 x 500 cm	4
14	Cravat	100 x 100 x 140 cm	2
15	Compressed Gauze	50 x 80 cm	2
16	Medicinal Gauze Pieces	7.5 x 7.5 cm	10
17	First-aid Carpet	130 x 210 cm	1
18	Rolling Plywood	92 x 11 cm	2
19	Tourniquet	-	1
20	Breathe-freely Adhesive Tape	1.25 x 200 cm	4
21	Medicinal Gloves	Size 7 or 7.5	1
22	Alcohol Cotton	-	10
23	Iodine Cotton Swabs	5 pcs/pac.	4
24	Scissor for Operation	12.5 cm	1
25	Dressing Clamp	12.5 cm	1
26	Flashlight	-	1
27	Sewing Bundle for Trauma	-	1set
28	Emergency Manual	-	1
29	First aid kit	62 x 36 x 30 cm	1

## Suction Portable

### XHE-9EA

#### Detailed Product Description

- Voltage: AC 220 V + 10%, 50 Hz + 2%
- Input power: 90 VA
- Noise:  $\leq 65$  dB
- Max negative pressure value:  $\geq 0.075$  MPa
- Pumping rate: 15 L/min
- Continuous Working Time: 0-30 min
- Rest time:  $\geq 30$  min
- Bottle Volume: 1000 ml
- N.W.: 4.32 kg
- G.W.: 5.06 kg
- Box size: 35 x 26 x 29 cm



### XHE-9EB

#### Detailed Product Description

- Voltage: AC 220 V + 10%, 50 Hz + 2% 12 VDC
- Input power: 90 VA
- Noise:  $\leq 65$  dB
- Max negative pressure value:  $\geq 0.075$  MPa
- Negative pressure range: 0.02 MPa to Max negative pressure
- Pumping rate: 15 L/min
- Continuous Working Time: 0 - 30 min
- Rest time:  $\geq 30$  min
- Bottle Volume: 1000 ml
- N.W.: 6.7 kg
- G.W.: 7.52 kg
- Box size: 35 x 26 x 29 cm



Outdoor

## Foot Operated Suction Pump

### XHE-9EC

#### Detailed Product Description

- Foot operated suction pump from base sheet iron and foot operated vacuum pump and vacuum indicator and collection container assembly and etc constitute.
- It is applicable to region where lack of electric power of electric power and temporary of stop supply electric power of urgent use.
- It has already defended to overflow protection device, It is a safety and credibility.
- It of the physical volume be small and weight light, It not demand electric power replenishment. it take a convenience.
- It meet the related request of ISO10079-2.



#### Technique

- In the vacuum of creation inside of 10 s  $\geq 0.04$  MPa (300 mmHg), Max vacuum:  $\geq 0.08$  MPa (600 mmHg).
- While max vacuum of arriving, the number of times stepped to move:  $\leq 12$ , Pedal pressure:  $\leq 245$  N.
- Normal foot work, the discharge is in the 10 s  $\geq 200$  mL.
- Max freed air flow  $\geq 20$  L/min.
- Collection Container: 1000 mL.
- Overall Dimension: 34 x 22 x 26.5 cm.
- Weight: 4 kg.
- Work environment: Temperature:  $+5^{\circ}\text{C} \sim +35^{\circ}\text{C}$ , Relative humidity:  $\leq 80\%$  ( $25^{\circ}\text{C}$ ), Atmospheric pressure: 86 kPa  $\sim$  106 kPa.

## Oxygen Concentrator

### XHE-9ED

#### Detailed Product Description

- Adopts American PSA technology, uses physical method to separate pure oxygen from air.
- French molecule sieve, long life and high efficiency.
- Compact structure design, light weight, easy to move.
- Advanced oil-free compressor, save 30% power energy.
- 24 hours continuous working available, 10000 hours working time warranty.
- Big LCD Screen easy to operate.
- Remote control with timing setting.
- Power off alarm, abnormal voltage alarm.
- Time setting, times keeping and time counting.
- Optional nebulizer and oxygen purity alarm function.



#### Technical Data

Model	Product Size	Oxygen Flow	Oxygen Purity	Input Voltage	Output Pressure	Noise	Power	N.G.
XHE-9ED-1	35 x 34 x 47.5 cm	1-3 L/min	93% $\pm$ 3%	220 V 50 Hz	0.04 - 0.06 Mpa	43 dB	240 W	14 kg
XHE-9ED-2	35 x 34 x 47.5 cm	1-5 L/min	93% $\pm$ 3%	220 V 50 Hz	0.04 - 0.06 Mpa	45 dB	350 W	14.5 kg

## Portable Oxygen Converter Gas Cylinders



### Technical Data

Sales Code	Specifications	Water Capacity Lts	Outside Diameter mm	Overall Length mm	Wall Thickness mm	Empty Weight kg	Working Pressure bar
XH102-1	LW-102-1.0-20-H	1	102	221	6.8	1.76	200
XH102-2	LW-102-2.0-20-H	2	102	385	6.8	2.75	200
XH108-2	LW-108-2.5-15-H	2.5	108	413	5.6	2.65	150
XH111-7	LW-111-4.6-15-H	4.6	111	670	5.6	4.44	150
XH184-2	LW-184-10.7-15-H	10.7	184	585	9.3	10.8	150
XH203-2	LW-203-15.0-15-H	15	203	675	9.9	14.2	150
XH203-4	LW-203-21.3-15-H	21.3	203	900	9.9	19.3	150
XH232-3	LW-232-35.0-15-H	35	232	1138	11.7	30.3	150

## Defibrillator

### XHE-8000A (Monophasic)

#### Detailed Product Description

- Non-synchronizer External defibrillation.
- Energy 0, 3, 5, 7, 10, 20, 30, 50, 100, 200, 300, 360 joule.
- Charging time: At 360J less than 10 sec.
- Paddle options: Reusable external adult and pediatric paddles.
- Operates from the mains (AC) and with its internal Lead-acid battery (optional li-ion battery).



#### Technical Data

Model	Product Size (L x W x H)	Packing Size (1 pc)	Main Unit	N.W. (1 pc)	G.W.
XHE-8000A	320 x 205 x 410 mm	540 x 450 x 370 mm	Portable	9.0 kg	11.5 kg

### XHE-8000D (Biphasic)

#### Detailed Product Description

##### ECG:

- ECG lead: I, II, III, AVR, AVL, AVF, V1 - V6.
- Protection: withstand 4000V AC/50Hz voltage in isolation and work against.
- electrosurgical interference and defibrillation.
- ECG lead/cable: general lead/cable for adult, pediatric and neonatal patients.

##### Defibrillator:

- Defibrillator type Manual, Synchronized, Asynchronized.
- Out put wave form Monophasic or Biphasic.
- Energy accuracy < + 1%.
- Energy selection 0, 3, 5, 7, 10, 20, 30, 50, 100, 200, 300, 360 joule (nominal at a resistance of 50).
- Charging time Maximum 8 seconds to 360 Joules.
- Standard Adult / Pediatric Paddles Reusable external adult paddles (pediatric paddles integrated) 7" TFT display.



#### Technical Data

Model	Product Size (L x W x H)	Packing Size (1 pc)	N.W. (1 pc)	G.W.
XHE-8000D	320 x 210 x 410 mm	540 x 450 x 370 mm	11.5 kg	16 kg

## Integrated Healthcare Monitor

### XHE-11

#### Detailed Product Description

- Models: Aurora8 for 8" / Aurora10 for 10" / Aurora12 for 12"
- Bed side / Healthcare department / Clinical
- **Basic configuration:** ECG, RESP, HR, SPO2, PR, NIBP, TEMP.
- **Optional configuration:**
  - Touch screen, 12 lead ECG, Wi-Fi & GPRS, 2-IBR, ETCO2, 5AH battery.
  - Central monitoring system, Wall standing & Trolley
  - 8.4" / 10.4" / 12.1" high resolution TFT, color screen.
  - Fanless design.
  - 3/5 lead ECG.
  - ST and arrhythmia analysis.
  - SPO2 low perfusion index up to 0.1%.
  - Three alarm lights well distinguish technical and physiological alarm.
  - Pluggable Li-ion battery, max 5 hours continuous working time.
  - Connected with CMS by wire and wireless (3G and Wi-Fi).
  - Multi - language.



## Semi-Modular Monitor

### XHE-12

#### Detailed Product Description

- Models: Aurora 8S for 8" / Aurora 10S for 10" / Aurora 12S for 12"
- ICU / CCU / OR
- **Basic Configuration:** ECG, RESP, HR, SPO2, PR, NIBP, TEMP.
- **Optional Configuration:**
  - Touch Screen, Recorder, 12 lead ECG, ETCO2, 2-IBR, Wi-Fi & GPRS, 5 AH battery
  - Wall standing & Trolley, Central monitoring system.
  - 8.4" / 10.4" / 12.1" high resolution TFT, color screen.
  - Semi-Modular and fanless design.
  - Multi-language.
  - Various of operation modes: touch screen, knob, mouse, keyboard.
  - 3/5 lead ECG.
  - ST and arrhythmia analysis.
  - SPO2 low perfusion index up to 0.1%.
  - Three alarm lights well distinguish technical and physiological alarm.
  - Modular printer with 3 waveforms output.
  - Pluggable Li-ion battery, max 5 hours continuous working time.
  - Connected with CMS by wire and wireless (3G and Wi-Fi).



## I.V Stands

### XH-4 / 6 Hook

#### Detailed Product Description

- Circular "Ram Horn" (4 or 6 hooks).
- 18 inch diameter steel base provide the stand with excellent stability.
- Regulate the range: 100 cm.



XH-509



XH-510



XH-511



XH-512

### Railing IV Pole





## Baby Cart

### XHB-01

#### Detailed Product Description

- Specifications (L x W x H): 73 x 410 x 610 cm.
- Material: full stainless steel with castor.
- Optional accessory: Mattress.
- MOQ: 10 pcs.



### XHB-02

#### Detailed Product Description

- Specifications (L x W x H): 89 x 53.5 x 81.5 cm.
- N.W.: 23 kg.
- G.W.: 27 kg.
- Material: steel epoxy with transparent GRP and castor.
- The height can be adjusted by gas spring, easy for mother and the baby to communicate.
- Aluminum column, transparent and hi-intensity baby basin, make the appearance of the whole cart to be beautiful, decent and practical.
- The trendelenburg can also be adjusted by the gas spring system.
- Optional accessory: Mattress.



### XHB-03

#### Detailed Product Description

- Specification (L x W x H): 87.5 x 52.5 x 65 ~ 90 cm.
- Stainless steel frame, with mattress.
- With plastic crib for baby keeping.
- Can be trendelenburg and reversed trendelenburg in different angles.
- Mounted on the casters, with brake.
- MOQ: 5 pcs.



## Electric Hospital Bed (ICU)

### XH-5618K(I) Five Functions

#### Detailed Product Description

- Specification (L x W x H): 215 x 105 x H50 ~ 80 cm.
- N.W.: 120 kg.
- G.W.: 130 kg.
- Standard Accessories:
  - Detachable ABS head / foot board.
  - Collapsible ABS guardrails.
  - Handle with lock.
  - Nurse control panel.
  - Integrated stamping frame and mattress base are made of steel epoxy.
  - I.V Pole & Drainage hook with PU cover.
  - Center control lock.
  - Chassis with ABS cover.
- Optional accessory: Mattress & over-bed table & bedside cabinet & Back-up battery & CPR control.



### XH-3618L(II) Three Functions

#### Detailed Product Description

- Specification (L x W x H): 215 x 105 x 46 ~ 72 cm.
- N.W.: 100 kg.
- G.W.: 110 kg.
- Standard Accessories:
  - Detachable ABS head/foot board.
  - Collapsible ABS guardrails.
  - Integrated stamping frame and mattress base are made of steel epoxy.
  - I.V Pole & Drainage hook with PU cover.
  - Heavy duty caster with brakes 5".
  - Hand remote control.
- Optional accessory: Mattress & over-bed table & bedside cabinet & Back-up battery & CPR control.



# Manual Hospital Bed

## XH-T5611K Four Functions

### Detailed Product Description

- Specification (L x W x H): 208 × 98 × 43 cm.
- N.W.: 100 kg
- G.W.: 110 kg
- Standard Accessories:
  - Detachable ABS head / foot board.
  - Collapsible aluminum alloy guardrails.
  - Integrated stamping frame and mattress base are made of steel epoxy.
  - I.V Pole & Drainage hook with PU cover.
  - Center control lock.
  - Manual crank system 4 set.
- Optional accessory: Mattress & over-bed table & bedside cabinet.



## XH-T3611L(I) Three Functions

### Detailed Product Description

- Specification (L x W x H): 215 × 95 × 35 - 69 cm.
- N.W.: 92 kg.
- G.W.: 99 kg.
- Standard Accessory:
  - Detachable ABS head / foot board.
  - Collapsible aluminum alloy guardrails.
  - Integrated stamping frame and mattress base are made of steel epoxy.
  - I.V Pole & Drainage hook with PU cover.
  - Heavy duty caster with brakes 5".
  - Hand remote control.
- Optional accessory: Mattress & over-bed table & bedside cabinet & Back-up battery & CPR control.



## XH-T2611L(I) Two Functions

### Detailed Product Description

- Specification (L x W x H): 208 × 98 × 210 cm.
- N.W.: 60 kg
- G.W.: 65 kg
- Standard Accessories:
  - Detachable ABS head / foot board.
  - Collapsible aluminum alloy guardrails.
  - Integrated stamping frame and mattress base are made of steel epoxy.
  - I.V Pole & Drainage hook with PU cover.
  - Heavy duty caster with brakes 5".
  - Manual crank system 2 set.
- Optional accessory: Mattress & over-bed table & bedside cabinet.



# Manual Hospital Bed

## XHB-04 For child

### Detailed Product Description

- Specification (L x W x H): 90 × 80 × 21 cm.
- N.W.: 60 kg
- G.W.: 65 kg
- Rectangular frame of Head / Foot board with castor.
- Stamping bed surface.
- Up-down lift siderail.



## XHB-05

### Detailed Product Description

- Specification (L x W x H): 208 × 98 × 21 cm.
- N.W.: 50 kg.
- G.W.: 55 kg.
- Standard Accessories:
  - Detachable ABS head / foot board.
  - Integrated stamping frame and mattress base are made of steel epoxy.
  - I.V Pole & Drainage hook with PU cover.
  - Manual crank system 1set.
- Optional accessory: Mattress & over-bed table & bedside cabinet.



## XHB-06

### Detailed Product Description

- Specification (L x W x H): 208 × 98 × 21 cm.
- N.W.: 60 kg.
- G.W.: 65 kg.
- Standard Accessories:
  - Detachable stainless steel head/foot board.
  - Integrated stamping frame and mattress base are made of full stainless steel.
  - I.V Pole & Drainage hook with PU cover.
  - Heavy duty caster with brakes 5".
  - Manual crank system 1set.
- Optional accessory: Mattress & over-bed table & bedside cabinet.



## Bedstand

XHF-01



Size: 52 × 48 × 74 cm

XHF-02



Size: 45 × 47 × 78 cm

XHF-03



Size: 52 × 48 × 74 cm

XHF-04



Size: 48 × 47 × 76 cm

XHF-05

Over-bed Table



Size: 79 × 38 × 78 ~ 110 cm

XHF-06

Over-bed Table



Height: 70 ~ 75 cm

## Chair

XHF-07

Multifunctional Accompany Chair

### Detailed Product Description

- This product is made of pressed PVC artificial leather fabric, and powder coated steel tubes.



XHF-08

Luxury Transfusion Chair

### Detailed Product Description

- This product is made of pressed PVC artificial leather fabric, and powder coated steel tubes. And it also has 3 adjustable angles, and powder coated steel tubes.



XHF-09

New Accompanyer's Chair

### Detailed Product Description

- The fabric is pressed PVC artificial leather, extension spring inside, easy to close and open.



XHF-10

Luxurious Transfusion-Chair

### Detailed Product Description

- The fabric is pressed PVC artificial leather, 3 angles adjustable, with rotatable table.



### Technical Data

Model	Product Size (L x W x H)	Folding Size	Packing Size (1 PC)	N.W.
XHF-07	190 × 62 × 58 cm	65 × 62 × 42 cm	118.5 × 61.5 × 22 cm	22.5 kg
XHF-08	77 × 68 × 108 cm	-	92 × 63 × 35.5 cm	21.5 kg
XHF-09	204 × 71 × 43 cm	80 × 71 × 43 (back 98) cm	77 × 60 × 34 / 74 × 74 × 17 cm	36 kg
XHF-10	90 × 75 × 110 cm	-	98 × 60 × 44 cm	31 kg

## Emergency Trolley

**XH-ET-62526S**



Size: 75 × 47.5 × 93 cm

**XH-85037B**

Anesthesia Trolley



Size: 85 × 52 × 99 cm

**XH-85011A2**

Case History Trolley



Size: 85 × 52 × 101 cm

**XH-85037**



Size: 85 × 52 × 99 cm

**XH-75071A-LS**



Size: 75 × 47.5 × 93 cm

**XH-62512B3**



Size: 62.5 × 47.5 × 93 cm

**XH-80056J**

Nursing Trolley



Size: 80 × 59 × 89 cm

**XH-T18C21-DT**

Steel-Plastic Trolley



Size: 67 × 47.5 × 98.5 cm

**XH-LS50YC**

Case History Trolley



Size: 75 × 41 × 98 cm

## Instrument Cabinet

**XHF-11**

Detailed Product Description

- Material: Steel
- Product Size: 90 × 40 × 185 cm
- Thickness: 0.6 mm or 0.8 mm



**XHF-12**

Detailed Product Description

- Material: Steel
- Product Size: 90 × 40 × 185 cm
- Thickness: 0.6 mm or 0.8 mm



**XHF-13**

Detailed Product Description

- Material: Steel
- Product Size: 90 × 40 × 185 cm
- Thickness: 0.6 mm or 0.8 mm



**XHF-14**

Detailed Product Description

- Material: Steel
- Product Size: 90 × 40 × 185 cm
- Thickness: 0.6 mm or 0.8 mm



## Sharps Container

### XHE-06

#### Detailed Product Description

- Leak proof and puncture resistant
- Appropriate sliding opening
- Temporary closure & definite closure
- Needle removal cap
- Befitting for the pocket
- Smart Size
- Capacity: 0.2 L
- Product Size: 7.6 × 3.8 × 10 cm
- Carton Size (200 pcs): 38 × 36 × 42 cm



### XHE-07

#### Detailed Product Description

- Leak proof and puncture resistant
- Most popular quadrate shape
- Wide and clear opening for easy disposal
- Counterbalanced door for hand-free disposal
- Ergonomically-designed handle
- Temporary closure & definite closure
- Practical rotating / sliding temporary lid
- Comprehensive label details
- Safe to human health and environment
- Secure perimeter lock for safe usage and transportation
- Capacity: 5.0 L
- Product Size: 24.5 × 20 × 16.5 cm
- Carton Size (24 pcs): 51 × 42 × 29.5 cm



### XHE-08

#### Detailed Product Description

- Leak proof and puncture resistant
- Wide opening for easy disposal
- Secure perimeter lock for safe usage and transportation
- Traditional-designed round shape
- Temporary closure & definite closure
- Large and practical rotating/sliding temporary lid
- Comprehensive label details
- Safe to human health and environment
- Capacity: 3.6 L
- Product Size: 16.5 × 14 × 19 cm
- Carton Size (50 pcs): 52 × 52 × 30 cm



### XHE-09

#### Detailed Product Description

- New-developed round shape
- Leak proof and puncture resistant
- Funnel-designed and built-in needle removal cap for easy and safe disposal
- Convenient extra lid design for temporary and final closure
- Temporary closure & definite closure
- Secure perimeter lock for safe usage and transportation
- Various indent design for easy needle removal
- Comprehensive label details
- Safe to human health and environment
- Capacity: 3.0 L
- Product Size: 14 × 12 × 24 cm
- Carton Size (30 pcs): 48 × 32 × 48 cm



## Aluminum Crutches

### XHE-10



## Screen

### XHF-15

#### Detailed Product Description:

- This is made of stainless steel, it has characteristics of light-weighted, and easy folding.
- it is mainly used in the hospital.



#### Technical Data

Model	Product Size (Three Folding)	Packing Size (2 Sets)	N.W.	G.W.
XHF-15	H180 × W198 cm	182 × 68 × 18 cm	14 kg	15 kg

## Stainless Trolley

XH-Y01



Size: 67 x 45 x 90 cm

XH-Y02



Size: 67 x 45 x 90 cm

XH-002T



Size: 67 x 45 x 90 cm

XH-005



Size: L / 155 x 45 x 93 cm  
M / 140 x 45 x 90 cm  
S / 120 x 46 x 90 cm

XHF-16



Size: 41 x 46 x 43 cm

XHF-17



Size: 41 x 23 x 25 cm

XHF-18



Size: 45 x 35 x 105 cm

XHF-19



Capacity: 14 L

XHF-20



Size: 80 x 60 x 84 cm

## Gynecological Couch

YXH-105

### Detailed Product Description

- Whole stainless steel frame.
- Cushioned with foam mattress & leather covered & water proof.
- Leg holder adjustable & S.S basin.



### Technical Data

Model	Product Size (L x W x H)	Back-rest Adjustable by Double Ratchet Mechanism	Knee-rest Downwards	Packing Size (1 pc)
YXH-105	180 × 55 × 80 cm	0 ~ 70°	0 ~ 90°	85 × 60 × 32 cm

## Examination Couch

YXH-106

### Detailed Product Description

- Whole iron spray.
- Cushioned with foam mattress & leather covered & water proof.
- Size: 190 × 65 × 71 cm.



YXH-107



### Technical Data

Model	Product Size	Packing Size	Load Bearing	N.W.	G.W.
YXH-107	179 × 61 × 73 cm	91 × 62 × 14 cm	≤ 135 kg	13.6 kg	15 kg



## Coffin Trolley

### Detailed Product Description

- The coffin rack is made of high strength aluminum alloy material.
- It is mainly used for coffin placing.

### XH-8B



### Technical Data

Model	Product size (L x W x H)	Packing Size	N.W. (1 pc)	G.W.
<b>XH-8B</b>	123 x 49 x 67 cm	125 x 14 x 51 cm	11.5 kg	12.5 kg

## Autopsy Table

### Detailed Product Description

- Made of stainless steel material.
- The swivel wheels lock to keep the table stationary while in use.
- The drain, located in the center of the foot end, quickly eliminates fluid from the table.

### XH-8C



### Technical Data

Model	Product Size	Packing Size	Load Bearing	N.W.	G.W.
<b>XH-8C</b>	204 x 76.5 x 83 cm	210 x 83 x 19 cm	≤ 159 kg	36 kg	40 kg

## Steel Trolley

### XH-1

### Detailed Product Description

- Made of steel, strong and durable.
- Flexible frame, light and easy to handle.
- Length can be adjusted freely.
- 4 carrying handles.



### XH-2

### Detailed Product Description

- Made of steel, strong and durable.
- Flexible frame, light and easy to handle.
- Length can be adjusted freely.
- 4 carrying handles.



### XH-4

### Detailed Product Description

- Made of steel, strong and durable.
- Flexible frame, light and easy to handle.



### Technical Data

Model	Product Size	Folding Size	Packing Size	Load Bearing	N.W.	G.W.
<b>XH-1</b>	144 x 44.5 x 62 cm	22 x 16.5 x 77 cm	30 x 24 x 77 cm	≤ 450 kg	19 kg	20 kg
<b>XH-2</b>	141 x 49 x 60 cm	20 x 49 x 74 cm	58 x 24 x 74 cm	≤ 450 kg	22 kg	23 kg
<b>XH-4</b>	81 x 61 x 62 cm	95 x 61 x 26 cm	64 x 27 x 100 cm	≤ 300 kg	15 kg	16 kg

# Aluminum Alloy Church Truck

## Detailed Product Description

- Made of strong, rectangular, aluminum tube.
- This church trucks feature a protective, anodized finish that keeps the trucks looking bright and shiny-new as well as making them easy to clean.
- This model comes with convenient fold-out carrying handles.
- These enable the truck to navigate sills, curbs and other obstacles with ease and are very convenient when climbing stairs at churches and mausoleums.
- The church truck locks in four positions, allowing a wide range of casket sizes to be displayed with one truck.
- The additional length also increases the stability and makes an attractive appearance.

XH-5



XH-6



XH-7



A



B



C



D



E

5 wheels to choose

## Technical Data

Model	One Grade Size	Two Grade Size	Three Grade Size	Folding Size	Packing Size	Load Bearing	N.W. (1 pc)	G.W.
XH-5/6/7	84 x 60 x 72 cm	141 x 60 x 64 cm	166 x 60 x 56 cm	60 x 77 x 15 cm	60 x 18 x 82 cm	≤ 400 kg	14.6 kg	15.6 kg

# Catafalque

## Detailed Product Description

- It is made of steel pipes, three level plating-coated, have very beautiful finishing.
- Easy for cleaning, size is small when folded saving a lot of space.
- It is mainly used for coffin placing.

XH-9



## Detailed Product Description

- This coffin rack is made of steel material, chrome-coated, clean easily.
- It is mainly used for coffin placing.

XH-10



XH-11



## Technical Data

Model	Product Size (L x W x H)	Folding Size	Packing Size	Load Bearing	N.W. (1 pc)	G.W.
XH-9	126 x 55 x 57 cm	76 x 57 x 8 cm	78 x 8 x 59 cm	≤ 350 kg	10.4 kg	11 kg
XH-10 (big)	40 x 49 x 56.5 cm	59 x 49 x 8 cm	60 x 52 x 15 cm	≤ 350 kg	2.2 kg	5 kg
XH-10 (small)	34 x 49 x 47.5 cm	49 x 49 x 8 cm	60 x 52 x 15 cm	≤ 350 kg	2 kg	5 kg
XH-11 (big)	63 x 55 x 47 cm	63 x 47 x 3 cm	65 x 49 x 5 cm	≤ 350 kg	2.4 kg	5.5 kg
XH-11 (small)	48 x 40 x 39 cm	48 x 32 x 3 cm	65 x 49 x 5 cm	≤ 350 kg	2 kg	5.5 kg

## Funeral Body Bag

### XH-34

#### Detailed Product Description

- Material: double layer waterproof canvas.
- Thickness: gsm 120 g.
- Size (L x W to the nearest cm) : 200 × 50 × 25 cm.
- Handle: 6.
- Color: Black.
- The heavy duty blue body bag with envelope style zipper has the weight capacity of 300 pounds.
- The handles make it easy for transportation.



### XH-35

#### Detailed Product Description

- Material: Polyester fabric, PVC.
- Thickness: gsm 600 g.
- Size (L x W to the nearest cm) : 230 cm × 90 cm.
- Handle: 8.
- Color: Black.
- Heavy Duty Body Bag - Black 5 pcs/case - GSM600.



### XH-36

#### Detailed Product Description

- Material: PVC.
- Thickness: 0.15 mm.
- Size (L x W to the nearest cm) : 230 cm × 90 cm.
- Color: White.
- packing: 20 pcs/case.



### XH-37

#### Detailed Product Description

- Material: PVC.
- Thickness: 0.2 mm.
- Size (L x W to the nearest cm) : 225 cm × 90 cm.
- Color: Black.
- packing: 20 pcs/case.



### XH-38

#### Detailed Product Description

- Material: PVC.
- Thickness: 0.15 mm.
- Size (L x W to the nearest cm) : 230 cm × 90 cm.
- Handle: N/A.
- Color: white.



## Coffin Lowering Device

### XH-39

#### Detailed Product Description

- Made of stainless steel material, high-weighted.
- It has good load capacity, the surface is spray-coated.
- It is mainly used in the cemetery, it helps to put the coffin into the cemetery slowly, very convenient.



## Our Marketing Network



